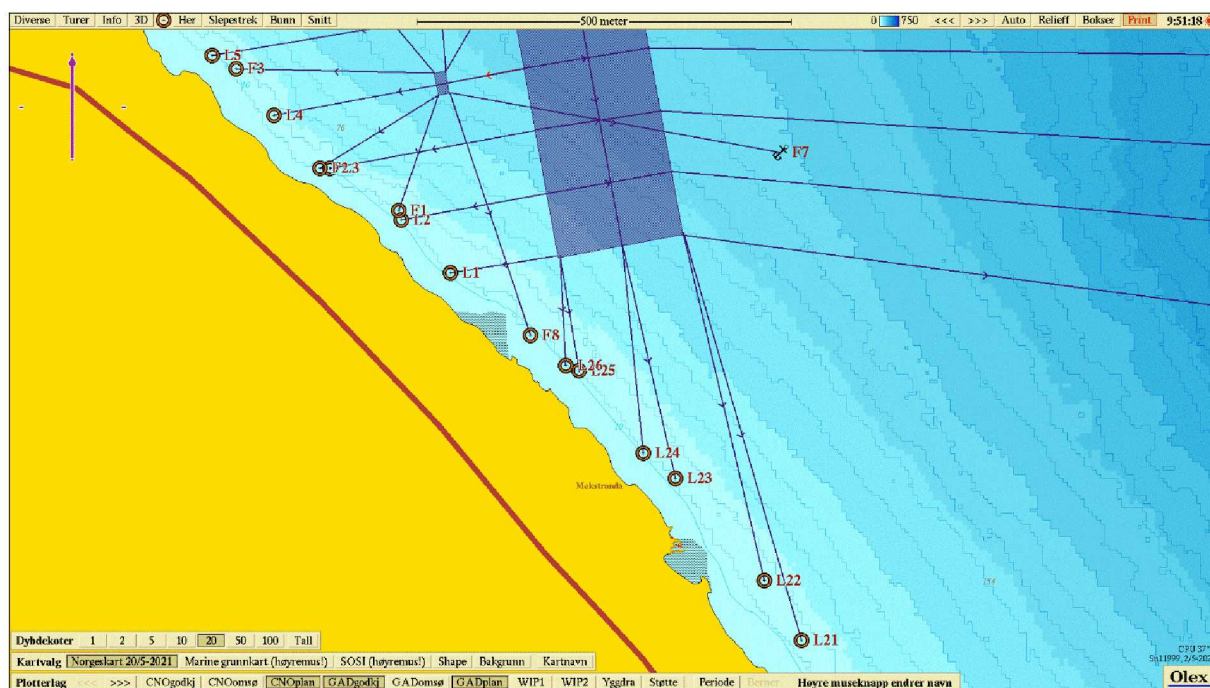
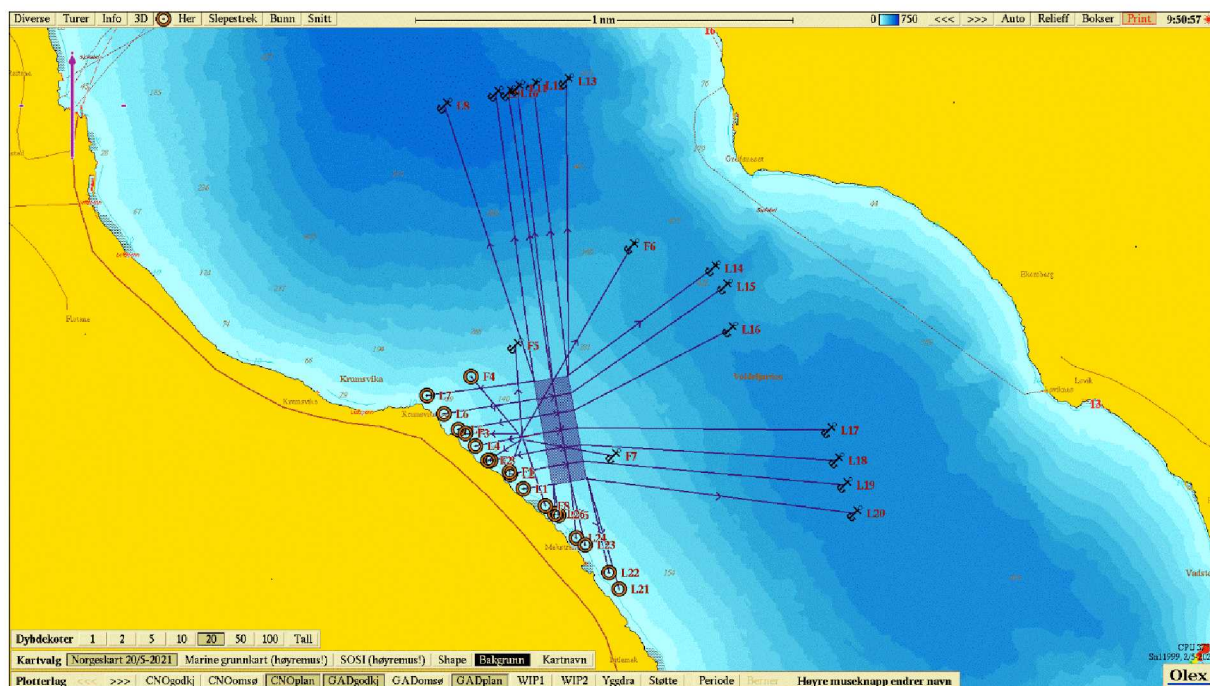


# Lokalitet Støylen - koordinater



Objekt	Punkt	Breddegrad	Lengdegrad
Overflatehjørner/bøyer	SV	62*06.231 N	6*04.637 Ø
	NV	62*06.502 N	6*04.533 Ø
	NØ	62*06.518 N	6*04.725 Ø
	SØ	62*06.248 N	6*04.829 Ø

Fortøyningsliner ramme	L1	62*06.220 N	6*04.471 Ø
	L2	62*06.258 N	6*04.395 Ø
	L3	62*06.295 N	6*04.286 Ø
	L4	62*06.333 N	6*04.199 Ø
	L5	62*06.376 N	6*04.125 Ø
	L6	62*06.417 N	6*04.020 Ø
	L7	62*06.467 N	6*03.925 Ø
	L8	62*07.233 N	6*04.025 Ø
	L9	62*07.264 N	6*04.314 Ø
	L10	62*07.267 N	6*04.384 Ø
	L11	62*07.281 N	6*04.435 Ø
	L12	62*07.286 N	6*04.528 Ø
	L13	62*07.298 N	6*04.711 Ø
	L14	62*06.803 N	6*05.541 Ø
	L15	62*06.754 N	6*05.609 Ø
	L16	62*06.641 N	6*05.640 Ø
	L17	62*06.374 N	6*06.197 Ø
	L18	62*06.295 N	6*06.239 Ø
	L19	62*06.230 N	6*06.288 Ø
	L20	62*06.154 N	6*06.345 Ø
	L21	62*05.955 N	6*05.012 Ø
	L22	62*05.998 N	6*04.954 Ø
	L23	62*06.072 N	6*04.817 Ø
	L24	62*06.090 N	6*04.768 Ø
	L25	62*06.149 N	6*04.669 Ø
	L26	62*06.153 N	6*04.648 Ø

Flåte	SV	62*06.348 N	6*04.453 Ø
	NV	62*06.364 N	6*04.446 Ø
	NØ	62*06.365 N	6*04.464 Ø
	SØ	62*06.349 N	6*04.470 Ø
Fortøyninger flåte	F1	62*06.265 N	6*04.391 Ø
	F2	62*06.295 N	6*04.270 Ø
	F3	62*06.367 N	6*04.141 Ø
	F4	62*06.517 N	6*04.173 Ø
	F5	62*06.598 N	6*04.424 Ø
	F6	62*06.862 N	6*05.082 Ø
	F7	62*06.307 N	6*04.979 Ø
	F8	62*06.175 N	6*04.594 Ø